



# CERTIFICATE OF ANALYSIS

## Drink BRĒZ

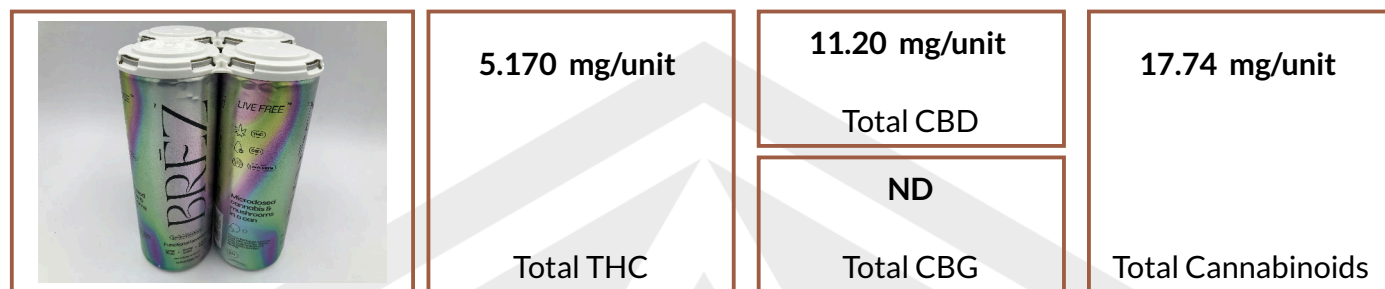
West Palm Beach, FL 33401

## Sample: 250130TRI003.007

Sample Description: BBOG12010; Sample Size: 4 units;  
Batch/Lot#: BBOG12010;  
Sample Received: 01/30/2025; Report Created: 02/06/2025;  
Sampled By: Client;

### BREZ Double

Ingestible, Beverage



### Cannabinoids

Date Analyzed: 01/30/2025

Complete

Analyte	LOD mg/unit	LOQ mg/unit	Result mg/unit	Result %
THCa	0.1161	0.3872	ND	ND
Δ9-THC	0.1161	0.3872	5.170	0.001433
Δ8-THC	0.1161	0.3872	ND	ND
THCVa	0.1161	0.3872	ND	ND
THCV	0.1161	0.3872	ND	ND
CBDa	0.1161	0.3872	ND	ND
CBD	0.1161	0.3872	11.20	0.003105
CBDVa	0.1161	0.3872	ND	ND
CBDV	0.1161	0.3872	ND	ND
CBN	0.1161	0.3872	1.363	0.0003777
CBGa	0.1161	0.3872	ND	ND
CBG	0.1161	0.3872	ND	ND
CBCa	0.2255	0.7518	ND	ND
CBC	0.1161	0.3872	ND	ND
CBL	0.1161	0.3872	ND	ND
<b>Total</b>			<b>17.74</b>	<b>0.004916</b>

1 Unit = 355 mL Can, 360.7688g

Unit Mass/Volume provided by Client and may affect the validity of "mg/unit" results.  
SOP:102, AOAC 2018.11 (Modified); UHPLC-PDA. Total THC = THCa \* 0.877 + Δ9-THC; Total CBD = CBDa \* 0.877 + CBD; Total CBG = CBGa \* 0.878 + CBG. Pass/Fail THC criteria, if listed, is in accordance with 86 FR 5596 issued by the USDA for pre-harvest hemp clearance (total THC - uncertainty ≤ 0.3% THC). Dry weight percent of cannabinoids, if listed, is calculated using the dried weight determined by the moisture content prior to extraction, indicated as follows (SOP:702; Gravimetry).

**TRI-  
CHOME  
ANALY-  
TI-CAL**

6000 Commerce Parkway Suite I  
Mount Laurel, NJ  
(856) 316-0600  
<http://www.trichomeanalytical.com>

Kristen Goedde  
Lab Manager

Tom Barkley  
Technical Manager

Confident LIMS  
All Rights Reserved  
[coa.support@confidentlims.com](mailto:coa.support@confidentlims.com)  
(866) 506-5866  
[www.confidentlims.com](http://www.confidentlims.com)



ND=Not Detected, NR=Not Reported, LOD=Limit of Detection, LOQ=Limit of Quantitation. Action levels reported for contaminants are in accordance with 10 NYCRR §1005 issued by the New York Cannabinoid Hemp Program. Where statements of conformity are reported, the simple acceptance decision rule is applied. Values reported relate only to the product tested and batched under the sample number identified above. Measurement uncertainties associated with values reported are available upon request. Trichome Analytical makes no claims as to the efficacy, safety, or other risks associated with any detected or non-detected level of any compounds reported herein. All analytical work is performed using validated methods and in accordance with state and/or federal guidelines. This certificate may only be reproduced in full.



# CERTIFICATE OF ANALYSIS

Drink BRĒZ

West Palm Beach, FL 33401

Sample: 250130TRI003.007

Sample Description: BBOG12010; Sample Size: 4 units;  
Batch/Lot#: BBOG12010;  
Sample Received: 01/30/2025; Report Created: 02/06/2025;  
Sampled By: Client;

BREZ Double  
Ingestible, Beverage



## Terpenes

Date Analyzed: 02/03/2025

## Primary Aromas

Analytes	LOD	LOQ	Result	Result
	%	%	%	mg/g
δ-Limonene	0.000284	0.000862	0.00134	0.0134
3-Carene	0.000284	0.000862	ND	ND
α-Bisabolol	0.000284	0.000862	ND	ND
α-Cedrene	0.000284	0.000862	ND	ND
α-Humulene	0.000284	0.000862	ND	ND
α-Phellandrene	0.000284	0.000862	ND	ND
α-Pinene	0.000284	0.000862	ND	ND
α-Terpinene	0.000284	0.000862	ND	ND
Caryophyllene	0.000284	0.000862	ND	ND
β-Myrcene	0.000284	0.000862	ND	ND
β-Pinene	0.000284	0.000862	ND	ND
Borneol	0.00916	0.0275	ND	ND
Camphene	0.000284	0.000862	ND	ND
Camphor	0.00115	0.00344	ND	ND
Caryophyllene Oxide	0.000578	0.00172	ND	ND
Cedrol	0.000284	0.000862	ND	ND
Fenchyl Alcohol	0.000284	0.000862	ND	ND
Eucalyptol	0.000284	0.000862	ND	ND
Fenchone	0.000578	0.00172	ND	ND
γ-Terpinene	0.000284	0.000862	ND	ND
Geraniol	0.0183	0.0550	ND	ND
Geranyl Acetate	0.000284	0.000862	ND	ND
Guaiol	0.000284	0.000862	ND	ND
Isoborneol	0.00115	0.00344	ND	ND
Isopulegol	0.000284	0.000862	ND	ND
Linalool	0.000284	0.000862	<LOQ	<LOQ
Menthol	0.000578	0.00172	ND	ND
Nerol	0.00916	0.0275	ND	ND
Nerolidol	0.000284	0.000862	ND	ND
Ocimene	0.000284	0.000862	ND	ND
Pulegone	0.000284	0.000862	ND	ND
Sabinene	0.000284	0.000862	ND	ND
Sabinene Hydrate	0.000284	0.000862	ND	ND
Terpineol	0.000284	0.000862	<LOQ	<LOQ
Terpinolene	0.000284	0.000862	ND	ND
Valencene	0.000284	0.000862	ND	ND



**0.00%**  
Total Terpenes

SOP:202; HS-GC-MS.

**TRI-  
CHOME  
ANAL-  
TI-CAL**

6000 Commerce Parkway Suite I  
Mount Laurel, NJ  
(856) 316-0600  
<http://www.trichomeanalytical.com>

Kristen Goedde  
Lab Manager

Tom Barkley  
Technical Manager

Confident LIMS  
All Rights Reserved  
[coa.support@confidentlims.com](mailto:coa.support@confidentlims.com)  
(866) 506-5866  
[www.confidentlims.com](http://www.confidentlims.com)



ND=Not Detected, NR=Not Reported, LOD=Limit of Detection, LOQ=Limit of Quantitation. Action levels reported for contaminants are in accordance with 10 NYCRR §1005 issued by the New York Cannabinoid Hemp Program. Where statements of conformity are reported, the simple acceptance decision rule is applied. Values reported relate only to the product tested and batched under the sample number identified above. Measurement uncertainties associated with values reported are available upon request. Trichome Analytical makes no claims as to the efficacy, safety, or other risks associated with any detected or non-detected level of any compounds reported herein. All analytical work is performed using validated methods and in accordance with state and/or federal guidelines. This certificate may only be reproduced in full.



# CERTIFICATE OF ANALYSIS

## Drink BRĒZ

West Palm Beach, FL 33401

## Sample: 250130TRI003.007

Sample Description: BBOG12010; Sample Size: 4 units;  
Batch/Lot#: BBOG12010;  
Sample Received: 01/30/2025; Report Created: 02/06/2025;  
Sampled By: Client;

## BREZ Double

Ingestible, Beverage



## Microbials

Date Analyzed: 02/06/2025

## Pass

Analytes	Limit	Result	Status
Total Yeast & Mold Count	CFU/g 10000	CFU/g <100	Pass
Total Aerobic Bacteria Count	100000	<100	Pass
Total Enterobacteriaceae (BTGN) Count		<10	Tested
Shiga-toxin producing Escherichia coli (STEC)	Detected in 1g	Not Detected	Pass
Salmonella spp.	Detected in 1g	Not Detected	Pass
Listeria monocytogenes		Not Detected	Tested
Aspergillus spp. (A. fumigatus, A. flavus, A. niger, A. terreus)		Not Detected	Tested

SOP.606, SOP.607; qPCR and/or SOP.605; MPN.

**TRI-  
CHOME  
ANALY-  
TI-CAL**

6000 Commerce Parkway Suite I  
Mount Laurel, NJ  
(856) 316-0600  
<http://www.trichomeanalytical.com>

Kristen Goedde  
Lab Manager

Tom Barkley  
Technical Manager

Confident LIMS  
All Rights Reserved  
[coa.support@confidentlims.com](mailto:coa.support@confidentlims.com)  
(866) 506-5866  
[www.confidentlims.com](http://www.confidentlims.com)



ND=Not Detected, NR=Not Reported, LOD=Limit of Detection, LOQ=Limit of Quantitation. Action levels reported for contaminants are in accordance with 10 NYCRR §1005 issued by the New York Cannabinoid Hemp Program. Where statements of conformity are reported, the simple acceptance decision rule is applied. Values reported relate only to the product tested and batched under the sample number identified above. Measurement uncertainties associated with values reported are available upon request. Trichome Analytical makes no claims as to the efficacy, safety, or other risks associated with any detected or non-detected level of any compounds reported herein. All analytical work is performed using validated methods and in accordance with state and/or federal guidelines. This certificate may only be reproduced in full.



# CERTIFICATE OF ANALYSIS

## Drink BRĒZ

West Palm Beach, FL 33401

## Sample: 250130TRI003.007

Sample Description: BBOG12010; Sample Size: 4 units;  
Batch/Lot#: BBOG12010;  
Sample Received: 01/30/2025; Report Created: 02/06/2025;  
Sampled By: Client;

## BREZ Double

Ingestible, Beverage



## Mycotoxins

Date Analyzed: 02/03/2025

## Pass

Analytes	LOD	LOQ	Limit	Result	Status
	µg/g	µg/g	µg/g	µg/g	
Aflatoxin B1	0.000817	0.00272		ND	Tested
Aflatoxin B2	0.000817	0.00272		ND	Tested
Aflatoxin G1	0.000817	0.00272		ND	Tested
Aflatoxin G2	0.000817	0.00272		ND	Tested
Total Aflatoxins			0.0200	ND	Pass
Ochratoxin A	0.00327	0.0109	0.0200	ND	Pass

SOP.402; LC-MS/MS.

**TRI-  
CHOME  
ANALY-  
TI-CAL**

6000 Commerce Parkway Suite I  
Mount Laurel, NJ  
(856) 316-0600  
<http://www.trichomeanalytical.com>

Kristen Goedde  
Lab Manager

Tom Barkley  
Technical Manager

Confident LIMS  
All Rights Reserved  
[coa.support@confidentlims.com](mailto:coa.support@confidentlims.com)  
(866) 506-5866  
[www.confidentlims.com](http://www.confidentlims.com)



ND=Not Detected, NR=Not Reported, LOD=Limit of Detection, LOQ=Limit of Quantitation. Action levels reported for contaminants are in accordance with 10 NYCRR §1005 issued by the New York Cannabinoid Hemp Program. Where statements of conformity are reported, the simple acceptance decision rule is applied. Values reported relate only to the product tested and batched under the sample number identified above. Measurement uncertainties associated with values reported are available upon request. Trichome Analytical makes no claims as to the efficacy, safety, or other risks associated with any detected or non-detected level of any compounds reported herein. All analytical work is performed using validated methods and in accordance with state and/or federal guidelines. This certificate may only be reproduced in full.



# CERTIFICATE OF ANALYSIS

## Drink BRĒZ

West Palm Beach, FL 33401

## Sample: 250130TRI003.007

Sample Description: BBOG12010; Sample Size: 4 units;  
Batch/Lot#: BBOG12010;  
Sample Received: 01/30/2025; Report Created: 02/06/2025;  
Sampled By: Client;

## BREZ Double

Ingestible, Beverage



### Elemental

Date Analyzed: 02/05/2025

## Pass

### Heavy Metals

Analytes	LOD	LOQ	Limit	Result	Status
	µg/g	µg/g	µg/g	µg/g	
Arsenic	0.00651	0.0482	1.50	ND	Pass
Cadmium	0.000512	0.0241	0.500	ND	Pass
Lead	0.00609	0.0241	1.00	ND	Pass
Mercury	0.00276	0.00722	1.50	ND	Pass
Chromium	0.0259	0.0722		ND	Tested
Nickel	0.0266	0.0722		ND	Tested
Antimony	0.00805	0.0241		ND	Tested
Selenium	0.0126	0.0963		ND	Tested

### Nutrients

Analytes	LOD	LOQ	Limit	Result	Status
	µg/g	µg/g	µg/g	µg/g	
Copper	0.103	0.489		ND	Tested
Iron	1.67	5.00		ND	Tested
Manganese	0.0155	0.489		ND	Tested
Zinc	1.67	5.00		ND	Tested

SOP 502; ICPMS.

**TRI-  
CHOME  
ANALY-  
TI-CAL**

6000 Commerce Parkway Suite I  
Mount Laurel, NJ  
(856) 316-0600  
<http://www.trichomeanalytical.com>

Kristen Goedde  
Lab Manager

Tom Barkley  
Technical Manager

Confident LIMS  
All Rights Reserved  
[coa.support@confidentlims.com](mailto:coa.support@confidentlims.com)  
(866) 506-5866  
[www.confidentlims.com](http://www.confidentlims.com)



ND=Not Detected, NR=Not Reported, LOD=Limit of Detection, LOQ=Limit of Quantitation. Action levels reported for contaminants are in accordance with 10 NYCRR §1005 issued by the New York Cannabinoid Hemp Program. Where statements of conformity are reported, the simple acceptance decision rule is applied. Values reported relate only to the product tested and batched under the sample number identified above. Measurement uncertainties associated with values reported are available upon request. Trichome Analytical makes no claims as to the efficacy, safety, or other risks associated with any detected or non-detected level of any compounds reported herein. All analytical work is performed using validated methods and in accordance with state and/or federal guidelines. This certificate may only be reproduced in full.



# CERTIFICATE OF ANALYSIS

Drink BRĒZ

West Palm Beach, FL 33401

Sample: 250130TRI003.007

Sample Description: BBOG12010; Sample Size: 4 units;  
Batch/Lot#: BBOG12010;  
Sample Received: 01/30/2025; Report Created: 02/06/2025;  
Sampled By: Client;

**BREZ Double**  
Ingestible, Beverage



## Pesticides

Date Analyzed: 02/03/2025

Pass

Analytes	LOD	LOQ	Limit	Result	Status	Analytes	LOD	LOQ	Limit	Result	Status
	µg/g	µg/g	µg/g	µg/g			µg/g	µg/g	µg/g	µg/g	
Abamectin	0.0102	0.0341	0.300	ND	Pass	Fludioxonil	0.0102	0.0341	3.00	ND	Pass
Acephate	0.0102	0.0341	3.00	ND	Pass	Hexythiazox	0.0102	0.0341	2.00	ND	Pass
Acequinocyl	0.0102	0.0341	2.00	ND	Pass	Imazalil	0.0102	0.0341	0.100	ND	Pass
Acetamiprid	0.0102	0.0341	3.00	ND	Pass	Imidacloprid	0.0102	0.0341	3.00	ND	Pass
Aldicarb	0.0102	0.0341	0.100	ND	Pass	Kresoxim Methyl	0.0102	0.0341	1.00	ND	Pass
Azoxystrobin	0.0102	0.0341	3.00	ND	Pass	Malathion	0.0102	0.0341	2.00	ND	Pass
Bifenazate	0.0102	0.0341	3.00	ND	Pass	Metalaxyl	0.0102	0.0341	3.00	ND	Pass
Bifenthrin	0.0102	0.0341	0.500	ND	Pass	Methiocarb	0.0102	0.0341	0.100	ND	Pass
Boscalid	0.0102	0.0341	3.00	ND	Pass	Methomyl	0.0102	0.0341	0.100	ND	Pass
Captan	0.0817	0.272	3.00	ND	Pass	Mevinphos	0.0102	0.0341	0.100	ND	Pass
Carbaryl	0.0102	0.0341	0.500	ND	Pass	MGK-264	0.0204	0.0681		ND	Tested
Carbofuran	0.0102	0.0341	0.100	ND	Pass	Myclobutanil	0.0102	0.0341	3.00	ND	Pass
Chlorantraniliprole	0.0102	0.0341	3.00	ND	Pass	Naled	0.0102	0.0341	0.500	ND	Pass
Chlordane	0.0102	0.0341	0.100	ND	Pass	Oxamyl	0.0102	0.0341	0.500	ND	Pass
Chlorfenapyr	0.0102	0.0341	0.100	ND	Pass	Paclobotrazol	0.0102	0.0341	0.100	ND	Pass
Chloromequat chloride	0.0102	0.0341	3.00	ND	Pass	Parathion Methyl	0.0102	0.0341	0.100	ND	Pass
Chlorpyrifos	0.0102	0.0341	0.100	ND	Pass	Pentachloronitrobenzene	0.0102	0.0341	0.200	ND	Pass
Clofentezine	0.0102	0.0341	0.500	ND	Pass	Permethrins	0.0204	0.0681	1.00	ND	Pass
Coumaphos	0.0102	0.0341	0.100	ND	Pass	Phosmet	0.0102	0.0341	0.200	ND	Pass
Cyfluthrin	0.0409	0.136	1.00	ND	Pass	Piperonyl Butoxide	0.0102	0.0341	3.00	ND	Pass
Cypermethrin	0.0204	0.0681	1.00	ND	Pass	Prallethrin	0.0409	0.0341	0.400	ND	Pass
Daminozide	0.0102	0.0341	0.100	ND	Pass	Propiconazole	0.0102	0.0341	1.00	ND	Pass
Diazinon	0.0102	0.0341	0.200	ND	Pass	Propoxur	0.0102	0.0341	0.100	ND	Pass
Dichlorvos	0.0102	0.0341	0.100	ND	Pass	Pyrethrins	0.0409	0.136	1.00	ND	Pass
Dimethoate	0.0102	0.0341	0.100	ND	Pass	Pyridaben	0.0102	0.0341	3.00	ND	Pass
Dimethomorph	0.0102	0.0341	3.00	ND	Pass	Spinetoram	0.0102	0.0341	3.00	ND	Pass
Ethoprophos	0.0102	0.0341	0.100	ND	Pass	Spinosad	0.0102	0.0341	3.00	ND	Pass
Etofenprox	0.0102	0.0341	0.100	ND	Pass	Spiromesifen	0.0102	0.0341	3.00	ND	Pass
Etoazole	0.0102	0.0341	1.50	ND	Pass	Spirotetramat	0.0102	0.0341	3.00	ND	Pass
Fenhexamid	0.0102	0.0341	3.00	ND	Pass	Spiroxamine	0.0102	0.0341	0.100	ND	Pass
Fenoxycarb	0.0102	0.0341	0.100	ND	Pass	Tebuconazole	0.0102	0.0341	1.00	ND	Pass
Fenpyroximate	0.0102	0.0341	0.100	ND	Pass	Thiacloprid	0.0102	0.0341	0.100	ND	Pass
Fipronil	0.0102	0.0341	0.100	ND	Pass	Thiamethoxam	0.0102	0.0341	1.00	ND	Pass
Fonicamid	0.0102	0.0341	2.00	ND	Pass	Trifloxystrobin	0.0102	0.0341	3.00	ND	Pass

SOP.402; LC-MS/MS & SOP.302; GC-MS

**TRI—  
CHOME  
ANALY—  
TI—CAL**

6000 Commerce Parkway Suite I  
Mount Laurel, NJ  
(856) 316-0600  
<http://www.trichomeanalytical.com>

Kristen Goedde  
Lab Manager

Tom Barkley  
Technical Manager

Confident LIMS  
All Rights Reserved  
[coa.support@confidentlims.com](mailto:coa.support@confidentlims.com)  
(866) 506-5866  
[www.confidentlims.com](http://www.confidentlims.com)



ND=Not Detected, NR=Not Reported, LOD=Limit of Detection, LOQ=Limit of Quantitation. Action levels reported for contaminants are in accordance with 10 NYCRR §1005 issued by the New York Cannabinoid Hemp Program. Where statements of conformity are reported, the simple acceptance decision rule is applied. Values reported relate only to the product tested and batched under the sample number identified above. Measurement uncertainties associated with values reported are available upon request. Trichome Analytical makes no claims as to the efficacy, safety, or other risks associated with any detected or non-detected level of any compounds reported herein. All analytical work is performed using validated methods and in accordance with state and/or federal guidelines. This certificate may only be reproduced in full.



# CERTIFICATE OF ANALYSIS

Drink BRĒZ

West Palm Beach, FL 33401

Sample: 250130TRI003.007

Sample Description: BBOG12010; Sample Size: 4 units;  
Batch/Lot#: BBOG12010;  
Sample Received: 01/30/2025; Report Created: 02/06/2025;  
Sampled By: Client;

BREZ Double

Ingestible, Beverage



## Residual Solvents

Date Analyzed: 02/03/2025

Pass

Analytes	LOD	LOQ	Limit	Result	Status
	µg/g	µg/g	µg/g	µg/g	
1,1- Dichloroethene	0.0364	0.109	8.00	ND	Pass
1,2-Dichloroethane	0.146	0.437	5.00	ND	Pass
Acetone	14.6	43.7	5000	ND	Pass
Acetonitrile	14.6	43.7	410	ND	Pass
Benzene	0.0364	0.109	2.00	ND	Pass
Butane	14.6	43.7	2000	ND	Pass
Chloroform	0.0364	0.109	60.0	ND	Pass
Ethanol	14.6	43.7	5000	4210	Pass
Ethyl acetate	14.6	43.7	5000	ND	Pass
Ethyl ether	14.6	43.7	5000	ND	Pass
Ethylene oxide	0.146	0.437	5.00	ND	Pass
Heptane	14.6	43.7	5000	ND	Pass
n-Hexane	7.29	21.9	290	ND	Pass
Isopropyl alcohol	14.6	43.7	5000	ND	Pass
Methanol	14.6	43.7	3000	ND	Pass
Methylene chloride	0.0729	0.219	600	ND	Pass
Pentane	3.64	10.9	5000	ND	Pass
Propane	7.29	21.9	5000	ND	Pass
Toluene	7.29	21.9	890	ND	Pass
Trichloroethylene	0.0364	0.109	80.0	ND	Pass
Xylenes	7.29	21.9	2170	ND	Pass

SOP.204; HS-GC-MS.

**TRI-  
CHOME  
ANALY-  
TI-CAL**

6000 Commerce Parkway Suite I  
Mount Laurel, NJ  
(856) 316-0600  
<http://www.trichomeanalytical.com>

Kristen Goedde  
Lab Manager

Tom Barkley  
Technical Manager

Confident LIMS  
All Rights Reserved  
[coa.support@confidentlims.com](mailto:coa.support@confidentlims.com)  
(866) 506-5866



Lic# ISO/IEC 17025:2017 A2LA CERT# 5913.01 // DEA# RT0581098 // NJ HEMP# 34\_00077  
www.confidentlims.com  
ND=Not Detected, NR=Not Reported, LOD=Limit of Detection, LOQ=Limit of Quantitation. Action levels reported for contaminants are in accordance with 10 NYCRR §1005 issued by the New York Cannabinoid Hemp Program. Where statements of conformity are reported, the simple acceptance decision rule is applied. Values reported relate only to the product tested and batched under the sample number identified above. Measurement uncertainties associated with values reported are available upon request. Trichome Analytical makes no claims as to the efficacy, safety, or other risks associated with any detected or non-detected level of any compounds reported herein. All analytical work is performed using validated methods and in accordance with state and/or federal guidelines. This certificate may only be reproduced in full.



# CERTIFICATE OF ANALYSIS

## Drink BRĒZ

West Palm Beach, FL 33401

## Sample: 250130TRI003.007

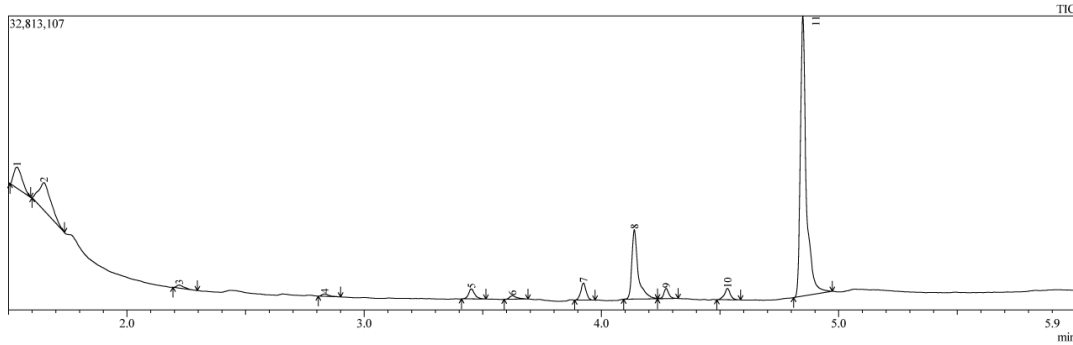
Sample Description: BBOG12010; Sample Size: 4 units;  
Batch/Lot#: BBOG12010;  
Sample Received: 01/30/2025; Report Created: 02/06/2025;  
Sampled By: Client;

## BREZ Double

Ingestible, Beverage



Synthetic cannabinoids presence/absence test  
Lab ID: 250130TRI003.007  
Sample ID: BBOG12010  
Analysis Date: 2/5/2025



Peak#	R. Time	Area%
1	1.535	5.99
2	1.649	11.39
3	2.220	0.76
4	2.833	0.54
5	3.451	2.08
6	3.625	0.87
7	3.924	3.14
8	4.138	14.89
9	4.273	1.73
10	4.531	2.30
11	4.849	56.31

Method: The results produced by this method are for R&D purposes only and outside the scope of Trichome Analytical's ISO 17025 accreditation.

Instrument: GCMS TQ8040NX  
Ion source: EI  
Scan: Q3 40-500 m/z  
Event time: 0.1 sec  
Ion source temp: 200 C  
Interface temp: 250 C  
Liner temp: 250 C  
Oven temp: 230 - 320 C ramp  
Column: Rxi-5ms 30 m  
Identification: NIST spectrum search

Analyst Notes:

None Detected: Delta-8-tetrahydrocannabinol (D8-THC)  
None Detected: Delta-9(11) exo-tetrahydrocannabinol (Exo-THC)  
None Detected: Delta-10-tetrahydrocannabinol (D10-THC)  
None Detected: THC-O acetate (THC-OA)  
None Detected: THC-O-phosphate (THC-O)  
None Detected: Hexahydrocannabinol (HHC)

Peak 1,2: Sugars  
Peak 5: CBC  
Peak 7: CBD  
Peak 9: delta9 THC  
Peak 11: background from labware

TRI-  
CHOME  
ANALY-  
TI-CAL

6000 Commerce Parkway Suite I  
Mount Laurel, NJ  
(856) 316-0600  
<http://www.trichomeanalytical.com>

Kristen Goedde  
Lab Manager

Tom Barkley  
Technical Manager

Confident LIMS  
All Rights Reserved  
[coa.support@confidentlims.com](mailto:coa.support@confidentlims.com)  
(866) 506-5866  
[www.confidentlims.com](http://www.confidentlims.com)



ND=Not Detected, NR=Not Reported, LOD=Limit of Detection, LOQ=Limit of Quantitation. Action levels reported for contaminants are in accordance with 10 NYCRR §1005 issued by the New York Cannabinoid Hemp Program. Where statements of conformity are reported, the simple acceptance decision rule is applied. Values reported relate only to the product tested and batched under the sample number identified above. Measurement uncertainties associated with values reported are available upon request. Trichome Analytical makes no claims as to the efficacy, safety, or other risks associated with any detected or non-detected level of any compounds reported herein. All analytical work is performed using validated methods and in accordance with state and/or federal guidelines. This certificate may only be reproduced in full.